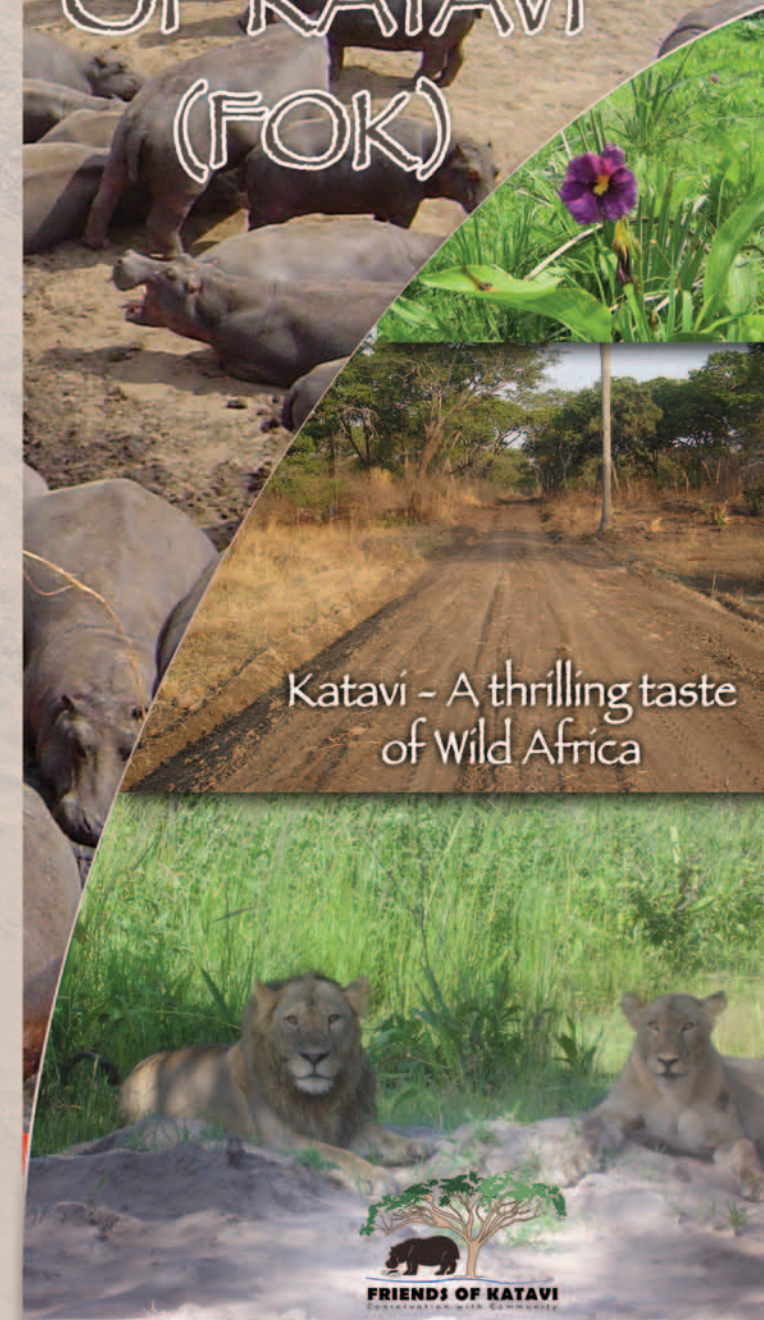
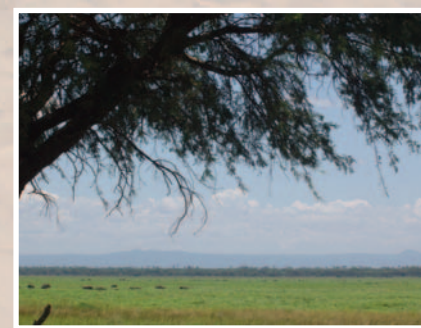


THE FRIENDS OF KATAVI (FOK)



Katavi - A thrilling taste of Wild Africa



Against this background, Friends of Katavi was formed in 2007. Working with all stakeholders aims to safeguard the future of Katavi-Rukwa Ecosystem by:

✦ Increasing interest in, and support

for Katavi-Rukwa, both locally and internationally, by organizing talks and guided tours both in the Park and in the surrounding ecosystem, writing informative articles in the local media and providing a forum for discussion on issues impacting upon the Ecosystem.

- ✦ Keeping abreast of developments around the Ecosystem in order to influence any decisions that could block migratory routes or otherwise adversely affect the wildlife.
- ✦ Assisting the Protected Areas managements through staff infrastructure development, capacity building, equipment, visitor education, game counts and research.
- ✦ Improving relations between the PA managements and neighbouring communities through conservation education.
- ✦ Collaborating with other groups or donors to support sustainable human development activities that are consistent to wildlife conservation and its wise use.
- ✦ Fund raising for special projects and events benefiting the Protected Areas and the communities in the Ecosystem.

What you can do

As a natural ecosystem Katavi-Rukwa provides services vital for human existence. However, its integrity is now increasingly threatened. By joining FOK you will:

- ✦ Support preservation of this unique and wild habitat by enhancing ability to carry out our functions.
- ✦ Help us identify and address emerging Katavi-Rukwa Ecosystem issues and threats.
- ✦ Raise awareness on importance of Katavi-Rukwa Ecosystem integrity.
- ✦ Help advocate and implement sustainable policies and practices to protect Katavi-Rukwa Ecosystem.
- ✦ Encourage building capacities of local communities to manage and benefit from wise use of Katavi-Rukwa Ecosystem resources.

More importantly, you will help the government achieve its obligations on sustainable development through management and wise use of natural resources.



For more information please contact:

The Secretariat,
The Friends of Katavi
P.O. Box 524,
Mpanda - TANZANIA

Tel: +255 754 302 133
E-mail: friendsofkatavi@gmail.com
Website: www.friendsofkatavi.com

Designed and printed by Meja Graphics
Box 671 Arusha. Tel/Fax. 027-2504748 Cell. 0754 463132

Surname: _____
First Name(s): _____
Company: _____
Address: _____
Tel: _____
Fax: _____
Email: _____

Signature: _____

Date: _____



P.O. Box 524,
Mpanda - RUKWA, TANZANIA

Tel: +255 754 302 133
E-mail: friendsofkatavi@gmail.com
Website: www.friendsofkatavi.com

Who we are

Friends of Katavi is a non governmental non profit making multi-institutional stakeholders consortium working to promote conservation and wise use of Katavi-Rukwa Ecosystem and development of local communities. It provides an institutional framework for participation of all stakeholders in discussions and activities to save the pristine Katavi-Rukwa Ecosystem cultural and natural resources.

Membership is currently composed and open to individuals, private companies, Government Institutions, national and international NGOs whose activities and operations either impact on natural ecosystems or are impacted on by Katavi-Rukwa Ecosystem and are interested in the status of the landscape.

The FOK SECRETARIAT is based at Sitalike Village, near Park Headquarters. It is charged with the task of implementing, in close consultation with the Management Committee, the decisions of the FOK membership. It plans, directs and reports on the progress made in carrying out the actions agreed upon by the members. Working closely with Tanzania National Parks, Wildlife Division, Mpanda, Nkasi and Chunya District Councils, FOK's broad-based membership aims to safeguard the integrity of Katavi National Park, Rukwa - Lukwati and Lwafi Game Reserves and propel local community development and empowerment.

Our Mission

Be the platform for constructive dialogue and discussion and sharing of ideas and resources for the conservation, sustainable use and social development of Katavi-Rukwa Ecosystem in Western Tanzania.



What we promote

- Dialogue, network and linkages among Katavi-Rukwa Ecosystem stakeholders in Tanzania as well as in the regional and international arenas.
- Conservation and wise use of local resources by initiating and implementing interventions on critical and emerging issues.
- Community development and capacity building in areas adjacent to Katavi Rukwa Ecosystem.

Threats to Katavi-Rukwa Ecosystem

- ▲ Rapid human population growth has resulted in over use and conversion of large proportion of the landscape into agricultural areas leading to the reduction of wildlife habitats and closure of migratory corridors.
- ▲ Lack of conservation education and awareness among the local communities in the ecosystem.
- ▲ Lack of comprehensive approaches in community development programmes.
- ▲ Degradation due to poor agriculture and mining practices, immigration of large livestock herds and overgrazing, wild fires and deforestation which are also causing water pollution and siltation of Lakes



- ▲ Katavi, Chada and Rukwa.
- ▲ Lack of equitable use of water resources in the catchment areas and along the major river causeways resulting in mass die off of wildlife and livestock down stream.
- ▲ Unsustainable illegal harvesting of wild animals and plants leading to local extinction of animal and plant species.
- ▲ Higher levels of poverty, illiteracy and other social malaise leading to poor ability to economic emancipation.



Why conserve KR Ecosystem

- It harbors the only true representation of miombo woodland in Tanzania.
- It protects and conserves important wetlands of Katavi, Chada and Rukwa which are critical habitats for wildlife and essential for human livelihood.
- It consists of diverse range of spectacular landscapes—open grassland plains, Rift Escarpments, Riverine forests, Hills, Lake Rukwa and waterfalls.
- It hosts a high large mammal biomass, second only to Serengeti and Ruaha, harboring one of the highest density of hippos in the world, critical stopover for migratory birds and a variety of wetlands and miombo woodland bird species.
- It protects and conserves worship and historical sites for local communities and African history.
- It is a core area for the new Western (Lake Tanganyika - Katavi) Circuit for tourists.

MEMBERSHIP APPLICATION FRIENDS OF KATAVI

Please enroll me as a member in the category indicated below:

TANZANIA/EAST AFRICA RESIDENTS

- (a) Individual Tsh 20,000
- (b) Family Tsh 30,000
- (c) Corporate Tsh 100,000
- (d) Donor Tsh 500,000 (min.)
- (e) Student Tsh 5,000

NON RESIDENTS

- (a) Individual US \$ 30
- (b) Family US \$ 50
- (c) Corporate US \$ 200
- (d) Donor US \$ 1,000 (min.)
- (e) Student US \$ 10

I enclose my cheque / cash for

(Cheque made payable to "Friends of Katavi")